

CERTIFIED LAND CORNER RECORDATION

DESCRIPTION OF CORNER EVIDENCE FOUND, AND ORIGINAL RECORD (If known)

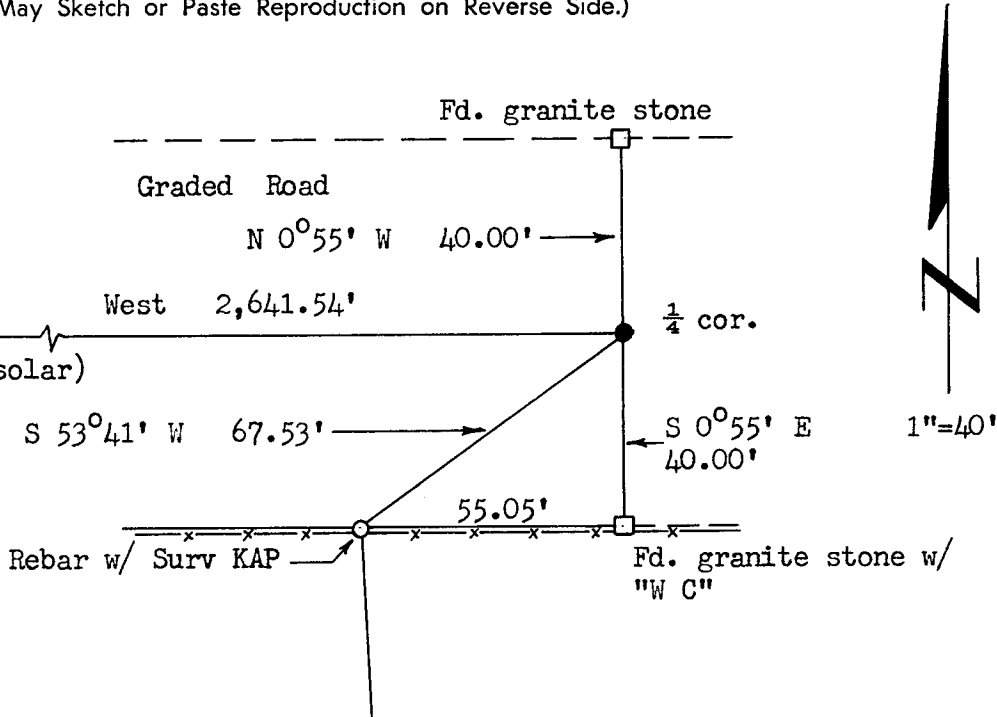
LOCATION
 S.25
 $\frac{1}{4}$
 S.36
 T.14N., R.66W.
 6th P.M.

No corner monument found.
 Found granite stone; bears N 0°55' W, 40.00 feet distant.
 Found granite stone with "W C" chiseled on north face; bears S 0°55' E, 40.00 feet distant.

DESCRIPTION OF MONUMENT AND ACCESSORIES ESTABLISHED TO PERPETUATE THE ORIGINAL LOCATION OF THIS CORNER:

1. Set 1 1/2" dia. x 30" long iron pipe with brass cap, 0.5' below road surface, for $\frac{1}{4}$ corner.
2. Set a 5/8" dia. x 24" long rebar with a Surv KAP stamped "CORNER", "LS 519", "1971"; bears S 53°41' W, 67.53 feet distant.

SKETCH, WITH COURSE AND DISTANCE TO ADJACENT CORNER IF DETERMINED IN THIS SURVEY.
 (May Sketch or Paste Reproduction on Reverse Side.)



Brass cap stamped:
 T14N R66W
 $\frac{1}{4}$ S 25
 S 36
 LS 519 1971

I, R.L. Hudson certify that I have carefully performed or reviewed the work done on the diagrammed corner as reported on this recordation form and approve the same.

R.L. Hudson Wyoming L.S. No. 519
 Signature of Surveyor Registration No.

STATE OF WYOMING,
 Office of Clerk and Recorder,
 County of Laramie

This "corner record" was filed for record on the 21st day of December, 1971, was noted on the cross-index plat and is assigned page No. 14-66, in book No. 708E.

John B. Hillman JW
 County Official

Cross Index No. _____	T. _____	R. _____	Mer. _____
_____	T. _____	R. _____	Mer. _____
_____	T. _____	R. _____	Mer. _____
_____	T. _____	R. _____	Mer. _____
_____	T. _____	R. _____	Mer. _____
_____	T. _____	R. _____	Mer. _____
_____	T. _____	R. _____	Mer. _____

The State of Wyoming }
County of Laramie } SS

This instrument was filed for record
at 4:48 o'clock P. M. on the

21 day of Dec
A. D. 1927

Book



County Clerk & Ex-Officio Register of Deeds
By _____, Deputy